

MLS Area 1N

Residential Statistics



October 2021

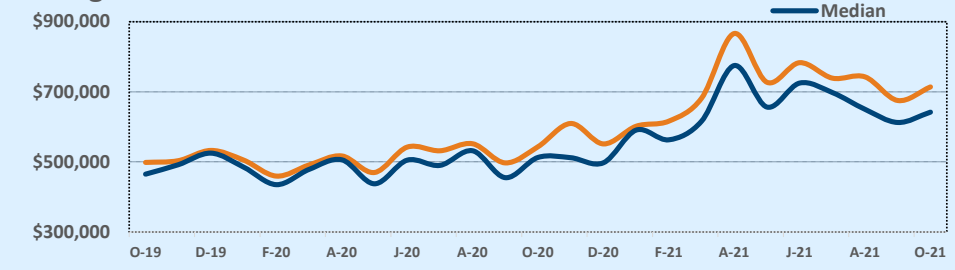
Listings	This Month			Year-to-Date		
	Oct 2021	Oct 2020	Change	2021	2020	Change
Single Family Sales	40	49	-18.4%	426	381	+11.8%
Condo/TH Sales	11	7	+57.1%	68	56	+21.4%
Total Sales	51	56	-8.9%	494	437	+13.0%
New Homes Only	--	--	--	1	4	-75.0%
Resale Only	51	56	-8.9%	493	433	+13.9%
Sales Volume	\$36,413,590	\$30,428,280	+19.7%	\$360,417,395	\$225,544,859	+59.8%
New Listings	43	57	-24.6%	585	524	+11.6%
Pending	--	--	--	--	--	--
Withdrawn	--	2	--	4	9	-55.6%
Expired	--	2	--	4	9	-55.6%
Months of Inventory	0.9	0.6	+49.7%	N/A	N/A	--

Price Range	This Month			Year-to-Date		
	New	Sales	DOM	New	Sales	DOM
\$149,999 or under	--	--	--	--	--	--
\$150,000-\$199,999	--	--	--	--	--	--
\$200,000-\$249,999	1	--	--	5	3	16
\$250,000-\$299,999	1	--	--	9	7	20
\$300,000-\$349,999	--	1	4	11	7	8
\$350,000-\$399,999	2	2	7	24	13	13
\$400,000-\$449,999	2	4	11	34	24	7
\$450,000-\$499,999	3	5	16	57	29	11
\$500,000-\$549,999	6	6	20	68	55	9
\$550,000-\$599,999	4	5	20	61	53	12
\$600,000-\$699,999	7	6	19	90	76	11
\$700,000-\$799,999	3	6	12	61	65	13
\$800,000-\$899,999	9	6	10	72	54	9
\$900,000-\$999,999	1	3	46	46	30	17
\$1M - \$1.99M	4	7	6	45	77	7
\$2M - \$2.99M	--	--	--	1	1	5
\$3M+	--	--	--	1	--	--
Totals	43	51	16	585	494	11

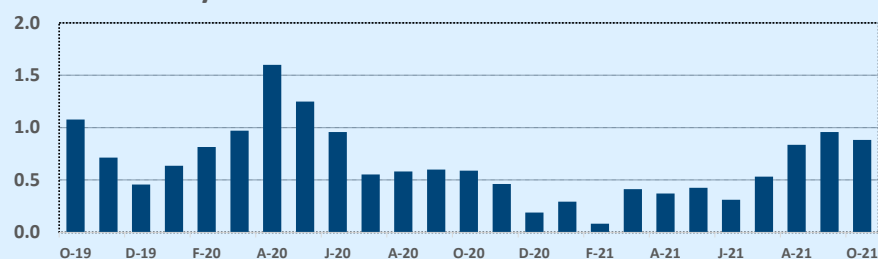
Average	This Month			Year-to-Date		
	Oct 2021	Oct 2020	Change	2021	2020	Change
List Price	\$677,845	\$537,183	+26.2%	\$668,873	\$515,146	+29.8%
List Price/SqFt	\$323	\$254	+27.3%	\$311	\$248	+25.4%
Sold Price	\$713,992	\$543,362	+31.4%	\$729,590	\$516,121	+41.4%
Sold Price/SqFt	\$337	\$257	+31.2%	\$337	\$249	+35.5%
Sold Price / Orig LP	104.6%	101.1%	+3.4%	108.9%	100.3%	+8.6%
Days on Market	16	15	+1.4%	11	17	-35.6%

Median	This Month			Year-to-Date		
	Oct 2021	Oct 2020	Change	2021	2020	Change
List Price	\$625,000	\$499,995	+25.0%	\$622,450	\$485,000	+28.3%
List Price/SqFt	\$324	\$250	+29.6%	\$309	\$248	+24.6%
Sold Price	\$642,000	\$512,750	+25.2%	\$660,000	\$490,000	+34.7%
Sold Price/SqFt	\$337	\$248	+35.8%	\$339	\$249	+36.5%
Sold Price / Orig LP	101.7%	100.0%	+1.7%	106.6%	100.0%	+6.6%
Days on Market	7	5	+40.0%	5	5	--

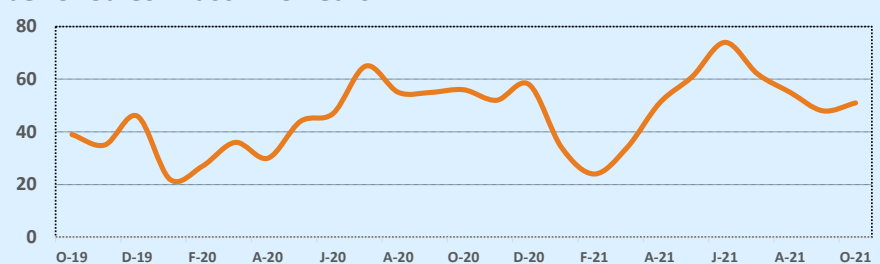
Average & Median Sales Price - Last Two Years



Months of Inventory - Last Two Years



Number of Sales - Last Two Years



Based on information from the Austin Board of REALTORS® (alternatively, from ACTRIS). Neither the Board nor ACTRIS guarantees or is in any way responsible for its accuracy. The Austin Board of REALTORS®, ACTRIS and their affiliates provide the MLS and all content therein "AS IS" and without any warranty, express or implied. Data maintained by the Board or ACTRIS may not reflect all real estate activity in the market.